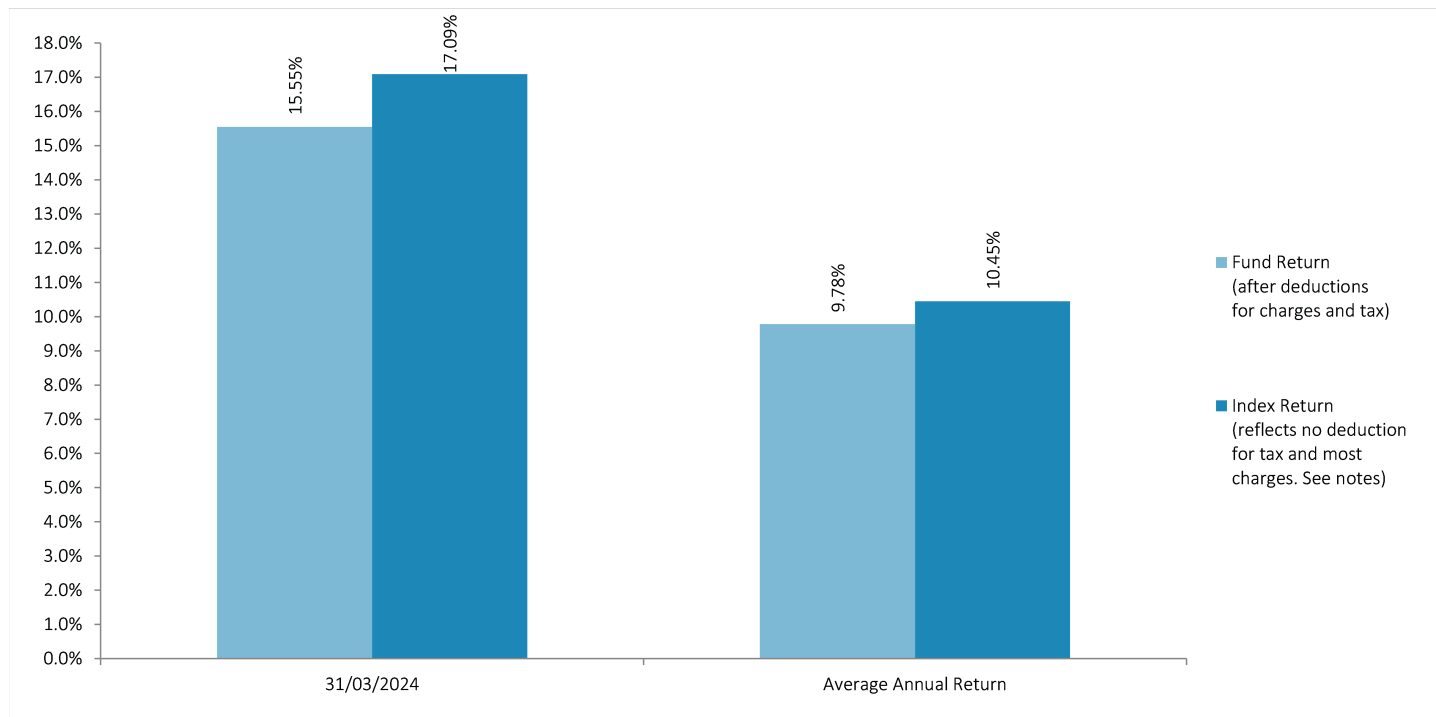




## Annual return graph



This shows the return after fund charges and tax for each year ending 31 March since the fund started. The last bar shows the average annual return since the fund started, up to 31 December 2024.

**Important:** This does not tell you how the fund will perform in the future.

Returns in this update are after tax at the highest prescribed investor rate (PIR) of tax for an individual New Zealand resident. Your tax may be lower.

## What fees are investors charged?

Investors in the AMP Growth Managed Fund are charged fund charges. In the year to 31 March 2024 these were:

	% of net asset value
<b>Total fund charges (estimated)<sup>2</sup></b>	0.80%
Which are made up of -	
<b>Total management and administration charges (estimated)</b>	0.80%
Including -	
Manager's basic fee	0.74%
Other management and administration charges (estimated) <sup>3</sup>	0.06%
<b>Total performance-based fees</b>	0.00%
<b>Other charges</b>	<b>Dollar amount per investor or description of how charge is calculated</b>
NIL	

Investors may also be charged individual action fees for specific actions or decisions (for example, for withdrawing from or switching funds). See the 'Other Material Information' document on the entry relating to the offer of interests in the AMP Managed Funds maintained on the offer register ([disclose-register.companiesoffice.govt.nz](https://disclose-register.companiesoffice.govt.nz)) for more information about those fees.

Small differences in fees and charges can have a big impact on your investment over the long term.

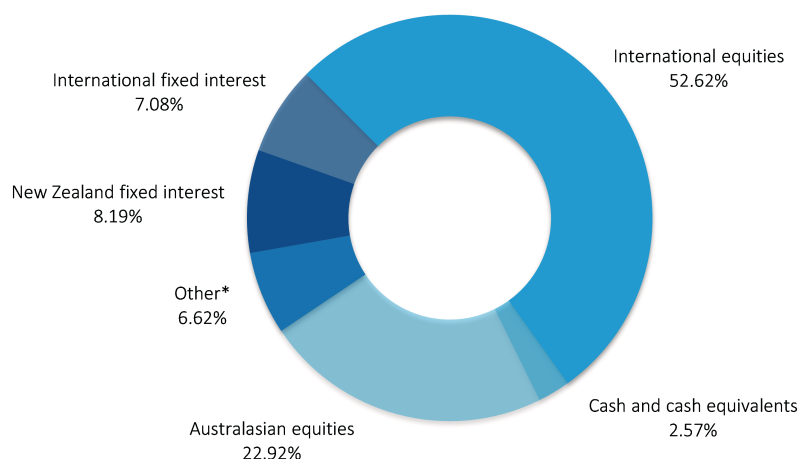
## Example of how this applies to an investor

Craig had \$10,000 in the fund at the start of the year and did not make any further contributions. At the end of the year, Craig received a return after fund charges were deducted of \$1,716.00 (that is 17.16% of his initial \$10,000). Craig also paid \$0.00 in other charges. This gives Craig a total return after tax of \$1,716.00 for the year.

## What does the fund invest in?

### Actual investment mix<sup>4</sup>

This shows the types of assets that the fund invests in.



### Target investment mix

This shows the mix of assets that the fund generally intends to invest in.

Asset Type	Allocation
Cash and cash equivalents	2.50%
New Zealand fixed interest	10.00%
International fixed interest	7.00%
Australasian equities	22.00%
International equities	52.00%
Listed property	0.00%
Unlisted property	0.00%
Commodities	0.00%
Other*	6.50%

\*Other includes direct and listed infrastructure assets.

### Top 10 investments<sup>4</sup>

Name	Percentage of fund net assets	Asset Type	Country	Credit rating (if applicable)
1 Fisher & Paykel Healthcare Corporation Limited	3.05%	Australasian equities	New Zealand	N/A
2 Apple Inc	2.44%	International equities	United States	N/A
3 NVIDIA Corp	2.16%	International equities	United States	N/A
4 Auckland International Airport Limited	2.00%	Australasian equities	New Zealand	N/A
5 Microsoft Corp	1.93%	International equities	United States	N/A
6 Infratil Limited	1.67%	Australasian equities	New Zealand	N/A
7 BNP USD Account	1.62%	Cash and cash equivalents	United States	N/A
8 New Zealand Government Inflation Linked Bond - maturing 20 Sep 2035	1.43%	New Zealand fixed interest	New Zealand	Aaa
9 Amazon.com Inc	1.36%	International equities	United States	N/A
10 Taiwan Semiconductor Manufacturing Company Ltd	1.05%	International equities	Taiwan	N/A

The top 10 investments make up 18.71% of the fund.

## Currency hedging

The fund will (or will invest in underlying funds that will) target:

- fully hedging foreign currency exposure from International fixed interest and Australasian equities;
  - hedging foreign currency exposure from International equities – Developed markets at 60% hedged to New Zealand dollars; and
  - not hedging foreign currency exposure from International equities – Emerging markets.
- a range of foreign currency hedging may be used at the discretion of the Manager - Other - Direct infrastructure.

## Key personnel

This shows the directors and employees who have the most impact on the investment decisions of the fund.

Name	Current position	Time in current position	Other current position	Time in other current position
Jeffery Darren Ruscoe	Investment Committee Member	5 years and 9 months	Managing Director, AMP Wealth Management New Zealand	2 years and 8 months
Mark David Ennis	Investment Committee Member	4 years and 5 months	Managing Director / Director, AdviceFirst Limited / AMP Wealth Management New Zealand	4 years and 10 months

## Further information

You can also obtain this information, the PDS for the AMP Managed Funds, and some additional information from the offer register at [disclose-register.companiesoffice.govt.nz](https://disclose-register.companiesoffice.govt.nz).

## Notes

- 1 As the fund started on 18 May 2022, actual returns for the last five years are not available. To calculate the risk indicator for the five year period up to the date of this fund update, a combination of market index returns and actual fund returns have been used where relevant. We consider this to be the most appropriate way to calculate the risk indicator, but as a result of this calculation, the risk indicator may provide a less reliable indicator of the potential future volatility of the fund than it would if actual returns for the last five years were able to be used.
- 2 The total fund charges are inclusive of any applicable GST.
- 3 The other management and administration charges include estimates of underlying fund charges provided by underlying fund managers.
- 4 The actual investment mix and top ten investments have been calculated excluding cash and cash equivalents held for operational purposes.

Phone 0800 267 001  
Email [investments@amp.co.nz](mailto:investments@amp.co.nz)  
Web [amp.co.nz](http://amp.co.nz)

Follow Us On



Want to know more?

For more information about the Scheme, please visit [amp.co.nz/investments/managed-funds](http://amp.co.nz/investments/managed-funds), contact us on 0800 267 001 or talk to your Adviser today.